

## Be aware of updates on your asylum claim!

If you missed a deadline, failed to respond to a notification in the process, or did not comply with a rule, your request may have been:



### TEMPORARILY CLOSED

#### IF YOU

- not responding to the notification to update your contact details;
- misses the interview;
- travels abroad without informing CONARE;
- remains outside Brazil for more than 90 days.



### PERMANENTLY CLOSED

#### IF YOU

- fail to renew the Asylum Protocol after 6 months of expiration;
- remain outside of Brazil for 2 years;
- obtain some type of migratory residence (humanitarian reception, border countries, family reunion, Mercosur, etc.)

How do I check the status of my process?

At **SISCONARE**  
[sisconare.mj.gov.br](http://sisconare.mj.gov.br)



[help.acnur.org/brazil](http://help.acnur.org/brazil)

 @ACNURBrasil  /company/acnur-brasil  
 @ACNURBrasil  /ACNURBrasil  
 @ACNURBrasil  /@acnur-brasil  
 @ACNURBrasil



# Are you an asylum seeker?

## ATTENTION

Check for updates regarding your claim

Your claim could be



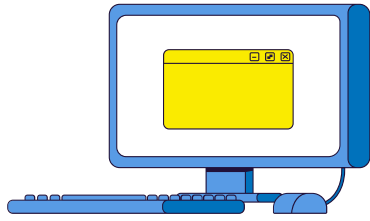
or



TEMPORARILY  
CLOSED

PERMANENTLY  
CLOSED

LEARN MORE 



## Checking the status of my process in **SISCONARE**

[sisconare.mj.gov.br](http://sisconare.mj.gov.br)

You can log in through:

- the registered email address
- the number of the Asylum Protocol or
- the number of your CPF

+ registered password

If you don't remember your login or password

- 1 Click on "Você esqueceu seu nome de usuário e/ou senha?" (*Forgot your username and/or password*)

- 2 Click on "Não tenho acesso ao meu e-mail principal" (*I don't have access to my main email*)

# What can I do if my asylum claim is temporarily or permanently closed?



IF IT IS  
**TEMPORARILY  
CLOSED**

You can request it to be re-opened by CONARE. You must fill out a form and submit the request electronically through SEI.

[sei.mj.gov.br](http://sei.mj.gov.br)



THE PROCESS WILL RESUME FLOWING WHERE IT LEFT OFF.

You can always:



Contact  
CONARE directly  
[conare@mj.gov.br](mailto:conare@mj.gov.br)



Request support from  
UNHCR partner  
organizations

If you have any further questions, please consult

[help.acnur.org/brazil](http://help.acnur.org/brazil)



IF IT IS  
**PERMANENTLY  
CLOSED**

It will be necessary to make a new asylum claim at SISCONARE.

