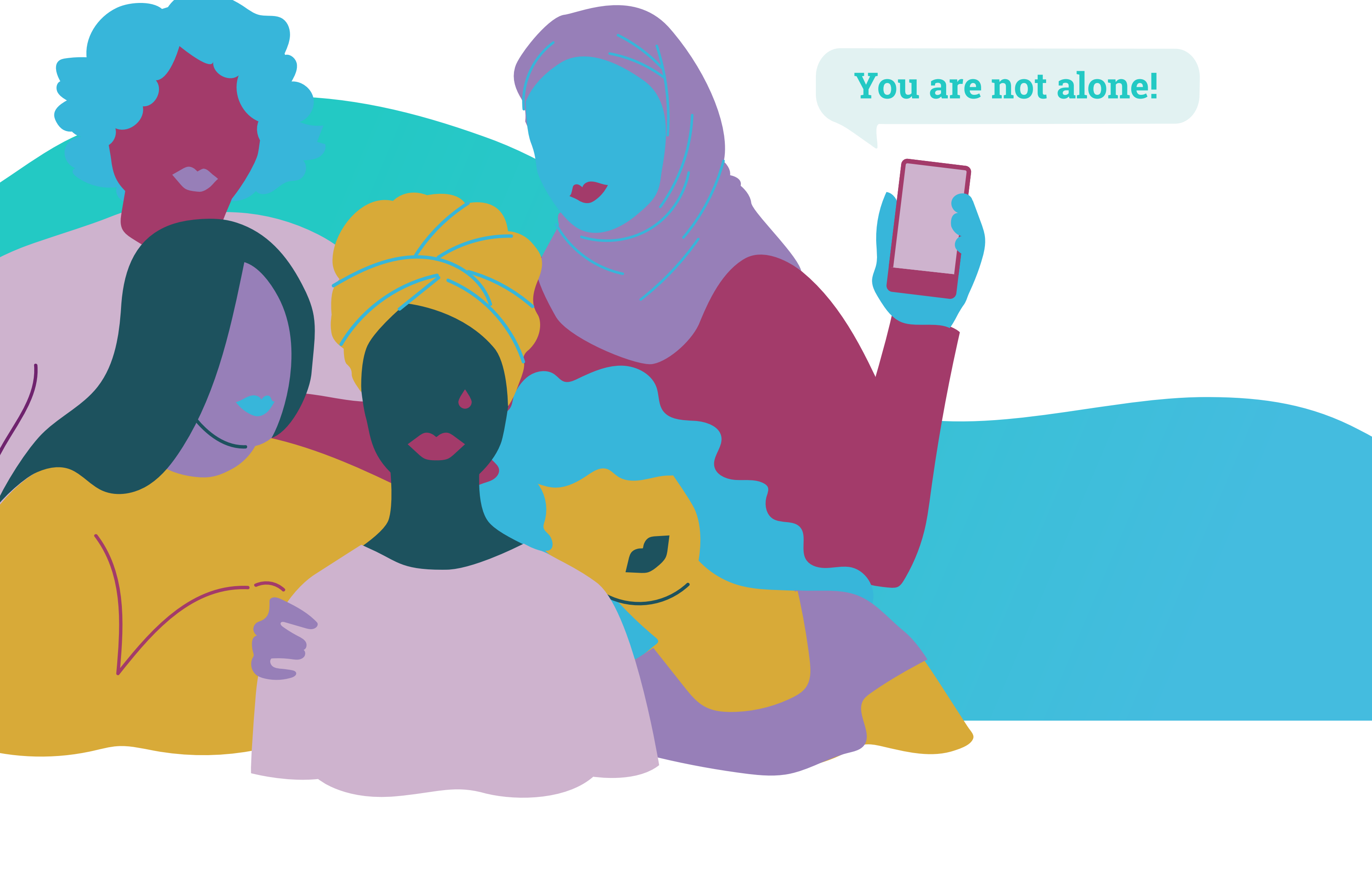


# Together we can make a stand against domestic abuse during quarantine



## What does domestic abuse mean and how can we identify it?

(2006's Maria da Penha Law)

### Aggression

Whether physical or verbal, includes punching, pushing, harassing and offending.

### Psychological abuse

Humiliation, oppression and manipulation are some examples.

### Financial abuse

Refers to conditions such as appropriation of documents, theft of belongings and imposed economic dependency.

### Sexual Violence

Whether to force sexual intercourse or impregnate against one's will.

### Moral abuse

Consists of defamation, public embarrassment and denigration of one's reputation.

## Are you under any of the conditions above? We are here to HELP you!



## I want to report domestic abuse. How to proceed?

### Dial 190

in emergencies only

### Dial 180

in non-emergency occurrences

You can text, **via the WhatsApp number (41) 99285-8134** the Núcleo de Promoção de Defesa dos Direitos da Mulher (Defense of Women's Rights Promotion Center) at State Public Defender's Office to obtain further information regarding your rights.

**Keep in mind it is NOT necessary to identify yourself.**

## We are here to HELP you!

The Federal University's **PMUB Mulheres**, offers **judicial and psychological services exclusively to foreign women victims of domestic abuse**. Within our crew, there are creole-speaking members who can assist with translations. You can contact us.



## What should I do if the abuse has already happened?

First, register a police report (Boletim de Ocorrência). Then, request **emergency protective measures** from the Women Protection Police Precinct (Delegacia da Mulher), open twenty-four hours a day.

In Curitiba, you can either call, write an e-mail or report personally to the **Casa da Mulher Brasileira**, a police precinct specialized in domestic abuse cases, located at Avenida Paraná, 870 – Cabral.

(41) 3221-2701 ou (41) 3221-2710  
E-mail address: [cmb@curitiba.pr.gov.br](mailto:cmb@curitiba.pr.gov.br)



## What should I do if my report has already been registered, but nevertheless I feel in danger?

In case the aggressor, despite the protective measures, approaches the victim or attempt any type of contact, **dial 153** (Maria da Penha's Police Patrol).

